

Bold Conversations to Effect Positive Change- Striving for Equality

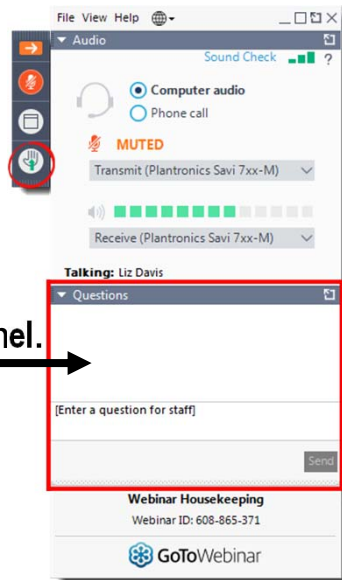
July 8, 2020

Housekeeping



Today's web seminar is being recorded.

All questions should be submitted via the Questions Panel.



Moderator



Scott Thacker
Chair, ELFA Equality Committee
Chief Executive Officer
Ivory Consulting Corporation

Panelists



Nate Gibbons
Member, ELFA Board of Directors
Chief Operating Officer
Innovation Finance USA LLC



Kyin Lok
Member, ELFA Equality Committee
Chief Executive Officer
Dext Capital



Charles Hill, Jr.
Member, ELFA Equality Committee
HR Business Partner
DLL



Kara Miyasato
Member, ELFA Equality Committee
Chair, ELFA Emerging Talent Advisory
Council
Director of Marketing
Stryker

ELFA EQUALITY

DIVERSITY & INCLUSION

ELFA Equality is committed to making sure that all people, regardless of their race, ethnicity, gender, sexual orientation, age, religion, physical characteristics or mental abilities, feel welcome and valued in the equipment finance industry, ELFA and member companies.

ELFA Equality Committee Vision Statement

Today's Discussion

- Candid discussion about structural and systemic racism, the way inequality manifests in our social, political and business ecosystems among our panelists.
- How can all of us in the equipment finance industry work to create a more equitable future?
- The statements made today are personal and do not necessarily reflect the positions of the panelists' employers.



Panel Discussion






COMING
SOON!

ELFA Equality Diversity & Inclusion Toolkit


ELFA EQUIPMENT LEASING AND FINANCE ASSOCIATION

9


The graphic features a hand holding a red briefcase with the text 'ELFA Equality Diversity & Inclusion Toolkit'. The briefcase has a dark blue patterned bottom section with colorful stick figures (yellow, green, red, blue) holding hands. To the left, two red banners read 'COMING' and 'SOON!'. The ELFA logo and name are at the bottom left, and the number '9' is at the bottom right.



This web seminar has been recorded and will be available, along with the slides, on the ELFA website.



To request a certificate for CPE, please contact Janet Fianko at jfianko@elfaonline.org.



Please complete the post-event survey – it will be sent to you shortly after today's web seminar.



ELFA EQUIPMENT LEASING AND FINANCE ASSOCIATION

10

The slide contains three main sections. The first section has a red circular icon with 'REC' and text stating the seminar is recorded. The second section has a blue 'CPE' logo and text for requesting a certificate, including an email address. The third section has an icon of people and a survey form with a checkmark, and text asking for a post-event survey. The ELFA logo and name are at the bottom left, and the number '10' is at the bottom right.

Thank You for Attending!

Join us next week, Wednesday, July 15th



**An Introduction
to Unconscious Bias**