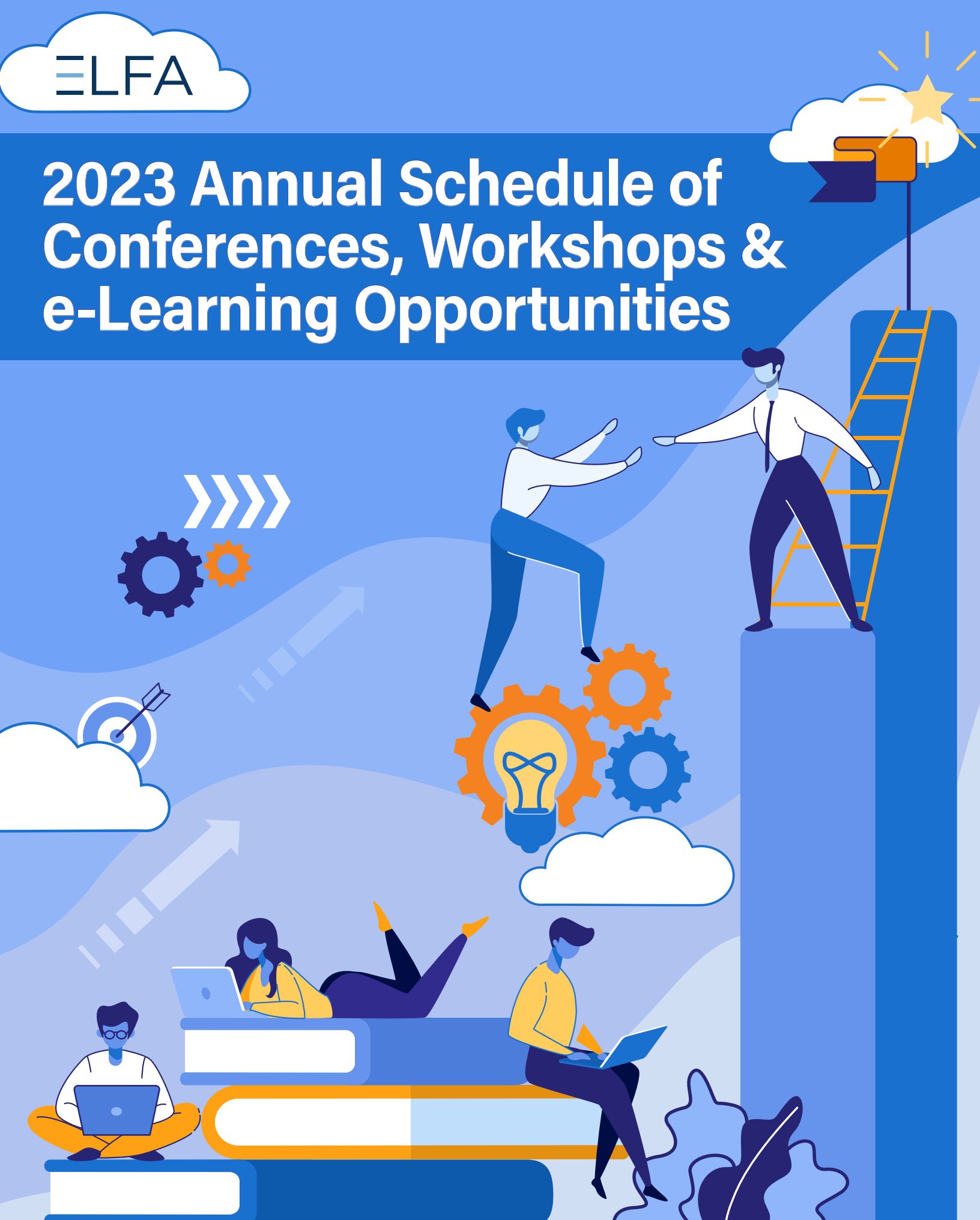


ELFA

2023 Annual Schedule of Conferences, Workshops & e-Learning Opportunities



»»»» FEBRUARY

February 26-28

Equipment Management Conference & Exhibition

Orlando World Center Marriott • Orlando, FL

- **Knowledge Level:** Basic, Intermediate and Advanced
- **Program Type:** Group-live event & exhibition
- **Prerequisite or Advanced Preparation Requirements:** None
- **NASBA Field of Study:** Finance - 2.0 CPE and Specialized Knowledge and Application – 8.0 CPE

Focusing on the issues concerning asset managers, equipment appraisers and remarketers for over a quarter of a century, this conference and exhibition is a "must attend" event for anyone involved in equipment management. The conference includes multiple sessions that evaluate the current market conditions, portfolio quality and residual values for a variety of equipment segments. The agenda includes live, on-site inspections of specialty vehicles, along with off-site equipment tours at actual worksite locations. In addition, everyone you need to talk to is under one roof at the world-class conference and exhibition.

Who Should Attend

Equipment management professionals, including senior managers and their staff and service providers to the industry.

Learning Objectives

After attending this conference, you will be able to:

1. Identify strategies that work best for you and recognize when to use them in your workplace.
2. Demonstrate the ability to make accurate equipment leasing decisions based on the content provided.
3. Learners will collectively have brainstormed, articulated, captured and addressed pertinent issues or concerns in their industry.

Exhibit Opportunities Available

For information on how your company can exhibit at this conference, contact Steve Wafalosky at (440) 247-1060 or steve@cvmpmedia.com.



»»»» MARCH

March 8

22nd Annual IMN/ELFA Investors Conference on Equipment Finance

Union League Club • New York, NY

Now in its 22nd consecutive year, the Investors Conference on Equipment Finance is set to attract increasing attention from analysts, bankers and institutional investors. Nearly half of the attendees represent investors and equipment finance companies who come to network and learn about the latest industry trends and developments. The agenda includes a review of the current landscape for commercial finance and equipment leasing, along with an update on the capital markets.

For more information on the 22nd Annual IMN/ELFA Investors Conference on Equipment Finance, please go to <https://events.imn.org/event/e86e975f-53e3-455f-994a-31d49fbda0ac/summary>.

Who Should Attend

CEO/CFO/finance directors of equipment finance companies, investors and providers of private capital, rating agencies, investment bankers, credit enhancers, financial advisors, technology service providers, trustees and attorneys.



March 14-16

34th Annual National Funding Conference

Hilton Palmer House • Chicago, IL

The ELFA National Funding Conference is the largest gathering of funding sources serving the equipment finance industry. This widely respected and highly popular forum provides the optimum atmosphere for funding sources and equipment finance companies to discuss funding programs and options. Confidentiality and access to key players are the main trademarks of this meeting.

If you are interested in becoming a Funding Source Exhibitor, contact Lisa Ramirez at lr Ramirez@elfaonline.org.

Who Should Attend

Principals in leasing and finance organizations responsible for funding the company and its transactions and for participating in transactions and those who want to meet with current funding sources, establish new relationships to fulfill their funding needs and keep current on the latest funding issues.



March 14

Bank Best Practices Roundtable
Captive and Vendor Finance Best Practices Roundtable
Independent Best Practices Roundtable
Small Ticket Best Practices Roundtable

Hilton Palmer House • Chicago, IL

The Best Practices Roundtables are small, highly interactive, half-day programs designed to bring senior executives together for information sharing and critical thinking about issues facing you each day as leaders of your organization. The Roundtables also provide an unparalleled networking opportunity.

Who Should Attend?

Bank Best Practices Roundtable

The roundtable is open to senior bank executives of ELFA member bank leasing companies.

Captive and Vendor Finance Best Practices Roundtable

The roundtable is open to senior executives of ELFA member captive and vendor finance companies.

Independent Best Practices Roundtable

The roundtable is open to senior executives of ELFA member independent leasing companies.

Small Ticket Best Practices Roundtable

The roundtable is open to senior executives of ELFA member independent leasing companies.

March 14

Emerging Talent Networking Event

The Emerging Talent Networking Events are an opportunity to network with your fellow industry colleagues. If you're a future leader, or just interested in meeting more people in the industry, please join us at the Emerging Talent Networking Event. There is no cost to attend but space is limited, and you must register in advance. Sponsored by the Emerging Talent Advisory Council (ETAC).

Sponsorship opportunities available. For information on how your company can sponsor this event, contact Steve Wafalosky at (440) 247-1060 or steview@cvmpmedia.com.

March 26-28

Executive Roundtable

Omni Amelia Island Resort • Amelia Island, FL

- **Knowledge Level:** Advanced
- **Program Type:** Group-live event
- **Prerequisite or Advanced Preparation Requirements:** Must be President, CEO or Top Company Leader
- **NASBA Field of Study:** Business Management and Org – 4.0 CPE and Specialized Knowledge and Application – 10.0 CPE.

The Executive Roundtable is the premier event for presidents, CEOs and other top leaders within the equipment leasing and finance industry. This two-day session is designed to bring

leaders together to discuss the issues of the day, to strategize about the future and to create lasting business relationships. Top-notch speakers and thought leaders have been invited to discuss topics such as forecasting trends in the equipment finance landscape; preparing leaders for the workforce of the future; protecting your company's data opportunity and challenges in the capital markets; and the new lease accounting rules. Case studies will examine how some companies are managing and staffing regulatory compliance issues, costs and outsourcing. Attendance is limited to encourage interaction and networking and roundtable wrap-ups after each session will serve to pull all this valuable information together.

Conference Qualifies for 14 CPE Credits

Who Should Attend

Attendance is still limited to the senior executive leadership from ELFA member companies. Executives must hold the position of president, CEO, managing director or COO and be part of the senior leadership team and/or manage a substantial division within the company. However, Service Provider Member Companies may now send two senior executives from their company to this Roundtable. ELFA Regular Member Companies may send up to three representatives from their companies.

Learning Objectives

After attending this conference, you will be able to:

1. Identify strategies that work best for you and recognize when to use them in your workplace.
2. Demonstrate the ability to make accurate equipment leasing decisions based on the content provided.
3. Learners will collectively have brainstormed, articulated, captured and addressed pertinent issues or concerns in their industry.

Sponsor Opportunities Available

For information on how your company can sponsor this event, contact Steve Wafalosky at (440) 247-1060 or steview@cvmpmedia.com.

APRIL

April 3-4

Women's Leadership Forum

Hilton Palmer House • Chicago, IL

This event is open to anyone who would like to attend and will focus on leadership development for women at all stages of an equipment finance career. The forum will feature dynamic speakers with plenty of time for attendee interaction and networking with other industry leaders. You'll leave this event with new insight and concrete action steps you can implement when you return to your office. *Sponsored by the ELFA Women's Council.*

Conference Qualifies for CLE Credits

MAY

May 7-9

Legal Forum

Hybrid Event - In-person & Virtual!

Marriott Sanibel Harbour Resort & Spa • Fort Myers, FL

- **Knowledge Level:** Intermediate, Advanced, Overview
- **Program Type:** Group-live event
- **Prerequisite or Advanced Preparation Requirements:** None
- **NASBA Field of Study:** Management, Personal Development, Specialized Knowledge & Applications, Taxes, Ethics

The premier event for attorneys serving the equipment finance industry, this conference provides an analysis of current legal issues facing lessors, offers a basic legal review for attorneys new to leasing, improves the professionalism of attorneys involved in leasing matters and creates an environment that encourages networking with peers. The Forum stresses practical solutions and strategies for addressing the practice of law as it affects the equipment leasing and finance community.

ELFA is a recognized sponsor of continuing legal education by most states in the U.S. Attendance at the conference may be used to fulfill your annual continuing education requirements.

Who Should Attend

Internal and external counsel, as well as entry- and senior-level attorneys.

Learning Objectives

After attending this conference, you will be able to:

1. Identify strategies that work best for you and recognize when to use them in your workplace.
2. Demonstrate the ability to make accurate equipment leasing decisions based on the content provided.
3. Learners will collectively have brainstormed, articulated, captured and addressed pertinent issues or concerns in their industry.

**Conference
Qualifies for
CLE Credits**

May 24

Capitol Connections

Hilton Washington DC • Washington, DC

This annual event presents the united voice of the equipment leasing and finance industry to federal policy makers. The program offers unmatched opportunities to develop and maintain relationships with elected officials and key regulators at select federal agencies and brings important industry issues to the forefront. ELFA member participation in the political process is critical if policymakers are to understand the nature and scope of public policy issues affecting the equipment finance sector. The conference includes a networking reception, detailed briefings on the latest public policy issues and meetings with legislators and Executive Branch officials. There is no registration fee for ELFA members to attend this conference.

To find out about ways to make a difference with your federal legislators, contact Andy Fishburn at afishburn@elfaonline.org.

Who Should Attend

Presidents, CEOs, and senior staff of member companies, including those whose job responsibilities include federal government liaison activities.

JUNE

June 7-9

Credit and Collections Management Conference & Exhibition

Hybrid Event - In-person & Virtual!

Hilton Palacio Del Rio • San Antonio, TX

- **Knowledge Level:** Basic, Intermediate, Overview
- **Program Type:** Group-live event & exhibition
- **Prerequisite or Advanced Preparation Requirements:** None
- **NASBA Field of Study:** Business Management and Org – 13.0 CPE

The ELFA Credit and Collections Management Conference and Exhibition addresses new and emerging issues relevant to credit and collections professionals in the equipment finance industry. The 2023 conference will include sessions on the state of the economy, the new lease accounting rules, human capital issues, the legal and regulatory environment, data analytics, risk and bankruptcy and other relevant topics. Additionally, the conference will provide ample opportunity to network with colleagues in the equipment finance industry.

Who Should Attend

Senior vice presidents and vice presidents of credit, credit managers, credit analysts, documentation specialists, collections managers and service providers to the industry.

**Conference
Qualifies for
13 CPE
Credits**

Learning Objectives

After attending this conference, you will be able to:

1. Identify strategies that work best for you and recognize when to use them in your workplace.
2. Demonstrate the ability to make accurate equipment leasing decisions based on the content provided.
3. Learners will collectively have brainstormed, articulated, captured and addressed pertinent issues or concerns in their industry.

Exhibit Opportunities Available

For information on how your company can exhibit at this conference, contact Steve Wafalosky at (440) 247-1060 or steve@cvmpmedia.com.

**Attorneys email Janet Fianko at jfianko@elfaonline.org in advance of the conference if you would like to receive CLE credits for this conference.*



June 22-23

Tax Best Practices Roundtable

Huntington National Bank • Cleveland, OH

The Tax Best Practices Roundtable is a one-day forum offered exclusively to tax practitioners of ELFA member companies. The roundtable focuses on federal and state compliance and planning issues, recent developments, and sharing of internal best practices.

Who Should Attend

Tax practitioners and other professionals that hold a position in tax, planning, research, business unit support or any other position responsible for corporate tax functions. This roundtable is open to ELFA members only.

Sponsored by  **VERTEX**

»»»» JULY

July 13-14

Emergence2023

Hilton Baltimore Inner Harbor • Baltimore, MD

Emergence2023 is an opportunity for emerging talent in the equipment leasing and finance industry to gather together and hear from industry leaders, network with colleagues and learn about the industry from different perspectives. If you're a future leader, please join us at Emergence2023 for this unique experience. Space is limited and you must register in advance. Sponsored by the Emerging Talent Advisory Council (ETAC).

July 13

Emerging Talent Networking Event

Hilton Baltimore Inner Harbor • Baltimore, MD

The Emerging Talent Networking Events are an opportunity to network with your fellow industry colleagues. If you're a future leader, or just interested in meeting more people in the industry, please join us. There is no cost to attend but space is limited, and you must register in advance. This event will include the attendees of Emergence2023. Sponsored by the Emerging Talent Advisory Council (ETAC).

**»»»» SEPTEMBER**

September 11-13

Operations & Technology Conference & Exhibition

Sheraton New Orleans • New Orleans, LA

- **Knowledge Level:** Basic, Intermediate, Overview
- **Program Type:** Group-live event & Exhibition
- **Prerequisite or Advanced Preparation Requirements:** None
- **NASBA Field of Study:** Business Management and Org – 14.0 CPE

The ELFA Operations and Technology Conference & Exhibition provides direction and support for member companies using technology to improve business processes, enhance customer satisfaction and increase operational effectiveness. Program highlights include sessions on project selection and building a business case, operational process mapping, application development methodologies, survival tips for the accidental project manager, and managing enterprise risk and information sharing. Also hear from the 2023 Operations & Technology Excellence Award winners; this award recognizes equipment leasing and finance companies that have demonstrated best practices in developing and implementing innovative uses of technology or creative business processes to improve operations, enhance customer interactions, enter new markets and build overall ROI.

The ELFA Operations and Technology Conference will again be held concurrently with the ELFA Lease and Finance Accountants Conference. Both conferences will share a table-top exhibit targeting companies that provide lease and finance accounting software and other technology-related processes and systems.

Who Should Attend

Executive management; directors of operations and administration; department managers for credit, collections, information technology, documentation, accounting, remarketing and equipment management; as well as representatives of companies providing systems.

**Conference
Qualifies for
14 CPE
Credits**

Learning Objectives

After attending this conference, you will be able to:

1. Identify strategies that work best for you and recognize when to use them in your workplace.
2. Demonstrate the ability to make accurate equipment leasing decisions based on the content provided.
3. Learners will collectively have brainstormed, articulated, captured and addressed pertinent issues or concerns in their industry.

Exhibit Opportunities Available

For information on how your company can exhibit at this conference, contact Steve Wafalosky at (440) 247-1060 or steve@cvmpmedia.com.

September 11-13

Lease and Finance Accountants Conference & Exhibition

Hybrid Event - In-person & Virtual!

Sheraton New Orleans • New Orleans, LA

- **Knowledge Level:** Basic, Intermediate, Advanced, Overview
- **Program Type:** Group-live event & Exhibition
- **Prerequisite or Advanced Preparation Requirements:** None
- **NASBA Field of Study:** Accounting – 19.8 CPE

The largest annual gathering of lease accountants and those responsible for financial reporting keeps attendees abreast of developments involving rule-making activities of the Financial Accounting Standards Board, international accounting standard-setters, state and federal tax authorities and other regulatory bodies. The agenda also includes timely sessions on the updated lease accounting standards and multiple sessions ranging from basic lease accounting for the newly hired accountant to discussions of complex and emerging accounting issues and their impact on business practices. A FASB board member participates in the program each year.

The ELFA Lease and Finance Accountants Conference will again be held concurrently with the ELFA Operations and Technology Conference. Both conferences will share a table-top exhibit targeting companies that provide lease and finance accounting software and other technology-related processes and systems.

ELFA is a recognized sponsor of continuing professional education with many State Boards of Accountancy and the National Association of State Boards of Accountancy U.S. (NASBA). Attendance at this conference may be used to fulfill your annual continuing education requirements.

Who Should Attend

Chief financial officers, accountants, controllers, and others responsible for financial reporting activity.

**Conference
Qualifies for
19.8 CPE
Credits**

Learning Objectives

After attending this conference, you will be able to:

1. Identify strategies that work best for you and recognize when to use them in your workplace.
2. Demonstrate the ability to make accurate equipment leasing decisions based on the content provided.
3. Learners will collectively have brainstormed, articulated, captured and addressed pertinent issues or concerns in their industry.

Exhibit Opportunities Available

For information on how your company can exhibit at this conference, contact Steve Wafalosky at (440) 247-1060 or steve@cvmpmedia.com.

September 13-14

Equity Forum

Sheraton New Orleans • New Orleans, LA

- **Knowledge Level:** Basic, Intermediate, Advanced, Overview
- **Program Type:** Group-live event & Exhibition
- **Prerequisite or Advanced Preparation Requirements:** None

The ELFA Equity Forum will be an opportunity to share innovations, build community, and collaborate to make progress towards a more sustainable and equitable future. Learn to create a culture of belonging where new and experienced employees feel engaged and included. Sponsorship opportunities available. For information on how your company can sponsor this event, contact Steve Wafalosky at (440) 247-1060 or steve@cvmpmedia.com.

September 13

People Power Networking Reception

Sheraton New Orleans, New Orleans, LA

ELFA's aspiration as an association is that the people powering the great equipment finance sector will represent a wide range of backgrounds and perspectives. Together with our member companies, ELFA is advancing initiatives to support equity, diversity and inclusion in everything we do.

To that end, we will be hosting a PEOPLE POWER networking event, combining the efforts of the Emerging Talent Advisory Council (ETAC), Equity Committee and Women's Council.

OCTOBER

October 22-24

ELFA 62nd Annual Convention

JW Marriott Phoenix Desert Ridge Resort & Spa • Phoenix, AZ

- **Knowledge Level:** Basic, Intermediate, Advanced, Overview
- **Program Type:** Group-live event & Exhibition
- **Prerequisite or Advanced Preparation Requirements:** None
- **NASBA Field of Study:** Business Management and Org – 8.7 CPE and Specialized Knowledge and Application – 8.7 CPE

The 62nd ELFA Annual Convention is the equipment leasing and finance industry's premier event. The Convention offers unmatched networking opportunities and high-quality educational sessions.

All educational sessions are selected from proposals submitted by ELFA members. If you have an idea for a session and would like to submit a proposal for consideration by the Convention Review Committee, the official call for proposals will open in May and will be available via the ELFA website. If you have further questions, please contact Heather Staverman at hstaverman@elfaonline.org.



Who Should Attend

All industry professionals who are looking to network and connect with a wide variety of equipment and leasing professionals will find their experience at the annual convention rewarding.

Learning Objectives

After attending this conference, you will be able to:

1. Identify strategies that work best for you and recognize when to use them in your workplace.
2. Demonstrate the ability to make accurate equipment leasing decisions based on the content provided.
3. Learners will collectively have brainstormed, articulated, captured and addressed pertinent issues or concerns in their industry.

Exhibit Opportunities Available

For information on how your company can exhibit at this conference, contact Steve Wafalosky at (440) 247-1060 or steve@cvmpmedia.com.

**Attorneys email Janet Fianko at jfianko@elfaonline.org in advance of the conference if you would like to receive CLE credits for this conference.*

Get Credit!

Continuing Education Credits

ELFA is a recognized sponsor of continuing professional education with The National Association of State Boards of Accountancy and many State Bar Associations. Most of ELFA's conferences and workshops qualify for CPEs or CLEs and attendees will be able to receive credit toward their licensing requirements. State boards of accountancy have final authority on the acceptance of individual courses for CPE credit. For a complete list of approved accredited courses and credit hours, go to www.elfaonline.org/Events/CEC/.

Continuing Legal Education (CLE)

There are several ELFA conferences that qualify for CLE credits and attendees will be able to receive credits toward their legal education requirements. The ELFA Legal Forum has been approved by many State Bar Associations for CLE credits. For a complete list of approved states and credit hours for the ELFA Legal Forum, go to www.elfaonline.org/events/CLE. If you have general questions regarding Continuing Education Credits, please contact Janet Fianko at jfianko@elfaonline.org.

Principles of Equipment Leasing and Finance Workshop

The Principles of Equipment Leasing and Finance workshop has been educating newly-hired personnel in the essentials of the business for more than two decades. This workshop helps your sales force become more confident when meeting with potential customers and provides your operations staff with a greater understanding of how the leasing and finance business works and where their individual responsibilities fit into the workflow.

This workshop is designed to teach the fundamentals of "business-to-business" commercial equipment leasing and finance for entry-level personnel and/or individuals with business experience who do not have a complete overview of the industry.

Who Should Attend

This workshop is designed to teach the fundamentals of "business-to-business" commercial equipment leasing and finance for entry-level personnel and/or individuals with business experience who do not have a complete overview of the industry. *It is recommended that attendees have at least 3-6 months in their current position before attending.*

For additional information on the workshops, go to: <https://www.elfaonline.org/events/principles-of-leasing-finance-workshops> or contact Alexa Carnibella at (202) 238-3416 or acarnibella@elfaonline.org.



Conference Resource Center

Whether you didn't attend an event or attended but couldn't make it to all the sessions, the Conference Resource Center (CRC) ensures that you'll never miss out again! View session recordings and download materials for many of ELFA's outstanding conferences.

If you attended a particular conference, access to the archived sessions is free of charge. All others may obtain access to the session recordings for a nominal fee.

Go to: <http://elfa.sclivelearningcenter.com>. For questions about the Conference Resource Center, contact Alexa Carnibella at (202) 238-3416 or acarnibella@elfaonline.org.



Bring These Workshops In-House!

Hosting a workshop at your own facility gives you the flexibility and convenience to address specific learning needs of your employees, establish collective knowledge and a shared skill set and achieve even your most challenging business goals. Our instructor comes to you and works with you to customize the content to your group's needs. If you have at least 10 people to train, this might be a more affordable alternative for you.

Principles of Equipment Leasing and Finance Workshop - varies

The in-house Principles workshop helps employees become more valuable members of your corporate team. That means getting a full understanding of the basics of the business within the context of what is happening now in the marketplace. The agenda includes: Industry Terminology; Lifecycle of a Lease; Time Value of Money; Legal, Tax and Accounting Rules and Regulations; Types of Lease and Finance Transactions; Law and Documentation; Lease Accounting; Benefits of Leasing; Fraud Prevention and Detection and much more!

Beyond the Basics Workshops - 1 day

Beyond the Basics is an in-house workshop that takes attendees beyond their basic knowledge of the industry and immerses them in an intensive one-day, real-world case study. Current and anticipated changes in tax, accounting and legal areas impact the pricing and underwriting process, as well as the lifecycle of the transaction from origination to termination. An in-depth analysis of an actual transaction, including pricing, three credit approvals and accompanying documentation will be covered during the workshop.

NEW! Time Value of Money Workshop - 1 day

This one-day workshop will prepare attendees to calculate and structure transactions through real-world scenarios and hands-on experience using a financial calculator. Attendees will use either the 17BII Pro or the HP 12C. If your company has a proprietary pricing model that can be used on either calculator, the workshop can be customized to meet your requirements.

Recommended class size is 10 attendees, allowing valuable one-on-one interaction with the instructor.

Want in-house training for your company? Contact Alexa Carnibella at (202) 238-3416 or acarnibella@elfaonline.org.



Be Your Best from Your Desk!

The ELFA Academy provides high quality, interactive training and resources in the essentials of equipment finance via online courses and web seminars.

FUNDAMENTALS OF EQUIPMENT LEASING AND FINANCE

BE THE BOSS with the Fundamentals of Equipment Leasing and Finance Online Course!

The Fundamentals of Equipment Leasing and Finance is a self-paced, online course designed to get you started in the equipment leasing and finance industry.

- Discover why equipment financing is good business;
- Follow the lifecycle of a transaction, from origination to termination;
- Learn about the tax laws, legal issues, and accounting practices and regulations that govern the industry; and
- Examine the various ways to structure a transaction and maximize customer satisfaction.

This course is divided in to 7 micro-lessons (8-10 minutes each), allowing learners to review the vital information every person new to the industry should know. Badges are earned for completing each micro lesson.

Next – take what you've learned and "be the boss" at Strategic Equipment Leasing and Finance, Inc. (S.E.L.F) – navigating through customer interactions, identifying the departments and individuals that should be involved in each step, and earning badges and upgrades as they go! From closing the sale to fielding customer requests and reviewing end-of-lease options, the learner will experience it all and will receive guided feedback to reinforce learning.

Audience

The Fundamentals of Equipment Leasing and Finance is designed for those new to the equipment leasing and finance industry. Those with more experience may use it as a reference tool.

Pricing

\$500/member

\$775/non-member

*Bulk pricing is available for purchases of 11+ licenses.

UNDERSTANDING THE MASTER LEASE AGREEMENT

What Every Equipment Finance Professional Should Know!

- Walk through the Master Lease Agreement section by section
- View real-world scenarios demonstrating how knowing what's in the MLA can make or break a deal
- Access and download exclusive resources available only through the course



Audience

This course is designed for equipment finance professionals in sales, credit, documentation, and anyone who would like a working knowledge of the purpose and contents of the master lease agreement.

Pricing

\$350/member

\$650/non-member

*Bulk pricing is available for purchases of 11+ licenses.

EQUIPMENT FINANCE TRANSACTION LIFECYCLE

This course takes you step-by-step through the lifecycle of an equipment finance transaction – from origination through termination. As you explore each lifecycle step, you'll focus on the 4Ps – the purpose, people, policies and paperwork tied to it. Knowing how all the components work together will ensure that you have not only the big picture, but the importance of your role in ensuring the success and satisfaction of your customer. Earn badges of achievement as you make progress through the course, culminating in a certificate of completion.

Audience

The course is designed for equipment finance professionals seeking a better understanding of the essential steps that make up a successful transaction and the importance of their role in the process.

Pricing

\$199/member

\$300/non-member

*Bulk pricing is available for purchases of 11+ licenses.

FINANCIAL STATEMENT ANALYSIS

Developed in conjunction with Moody's Analytics, Financial Statement Analysis is the only course of its kind available specifically for LEASING credit and risk professionals. The course not only covers the fundamentals that all credit professionals need to know but goes BEYOND to teach future-focused skills necessary in today's environment.

MOODY'S
ANALYTICS

Audience

Designed to help credit analysts, underwriters, portfolio managers and credit officers increase their proficiency in assessing risk and evaluating the creditworthiness of middle market companies through financial statement analysis in order to make thoughtful and well-informed credit decisions.

Pricing

\$395/member

\$790/non-member

For more information about these courses, visit the ELFA Academy Home Page: www.elfaonline.org/Events/eLearning/. For questions, contact Alexa Carnibella at (202) 238-3416 or acarnibella@elfaonline.org.

Get Noticed!

Marketing Opportunities

ELFA offers a number of marketing opportunities including sponsorships and exhibits to put you in touch with a network of industry representatives who are valuable prospects.

Conference Sponsorships

ELFA offers a fantastic conference sponsorship program as an additional opportunity for industry providers to network with industry executives. As a sponsor, your company is showcased to decision-makers in all facets of the equipment leasing and finance industry. Many of the conference sponsorships offer creative and unique methods to showcase your company and we are always open to new ideas and suggestions from industry providers.

The following conferences offer sponsorship programs:

Equipment Management Conference & Exhibition

February 26-28, 2023

Executive Roundtable

March 26-28, 2023

Women's Leadership Forum

April 3-4, 2023

Legal Forum

May 7-9, 2023

Credit and Collections Management Conference & Exhibition

June 7-9, 2023

Emergence2023

July 13-14, 2023

Operations & Technology Conference & Exhibition

September 11-13, 2023

Lease and Finance Accountants Conference & Exhibition

September 11-13, 2023

Equity Forum

September 13-14

ELFA 62nd Annual Convention

October 22-24, 2023

For more information about the ELFA conference sponsorship program and specific conference sponsorships, visit the ELFA website at www.elfaonline.org/events/sponsor or contact Steve Wafalosky at (440) 247-1060 or steve@cvmpmedia.com.



Exhibits

Don't miss opportunities to showcase your company's products and services to key decision makers and influencers in the equipment leasing and finance industry. ELFA's conferences are tailored to unique audiences within the industry and so are our exhibit opportunities. Whatever your target audience, you're certain to get the most for your investment.

The following conferences offer exhibit booth or tabletop opportunities:

Equipment Management Conference & Exhibition
February 26-28, 2023

Credit and Collections Management Conference & Exhibition
June 7-9, 2023

Operations & Technology Conference & Exhibition
September 11-13, 2023

Lease and Finance Accountants Conference & Exhibition
September 11-13, 2023

ELFA 62nd Annual Convention
October 22-24, 2023

Additional information regarding each conference and specific offerings for exhibit space including scope of attendees, booth cost, floor plans, specific booth details and more may be found in the Exhibit Prospectus for each individual conference. If you would like information on exhibiting at ELFA conferences, visit the ELFA website at www.elfaonline.org/Events/Exhibit or contact Steve Wafalosky at (440) 247-1060 or steve@cvmpmedia.com.

ELFA Awards

ELFA recognizes the contributions of industry members through a number of awards. We like to recognize our members for many of the important contributions they make to the industry and these awards serve as a small way to show our gratitude and appreciation. Below is information about each award ELFA offers.

If you would like information on ELFA Awards, visit the ELFA website at www.elfaonline.org/about/awards.

Well-being Protocols at ELFA Events

As we continue taking important steps to provide for the health and safety of our attendees, we ask that you review our COVID information and policies below. By registering for these events you agree to adhere to the below policies to sustain a healthy and safe environment for our members. It's important that we all respond responsibly and transparently to these health precautions. Any and all private health and personal data will be treated with confidentiality and sensitivity.

Because COVID is extremely contagious and is spread mainly from person-to-person contact, Equipment Leasing and Finance Association ("ELFA") has adopted preventative measures to reduce the spread of the COVID virus at its conferences and events in accordance with guidance published by the U.S. Centers for Disease Control and Prevention for events and gatherings, in coordination with event host properties. ELFA will comply with all applicable requirements imposed by state, provincial, and local health authorities for the locality in which the conference or event takes place. However, ELFA cannot guarantee that conference attendees will not become infected with COVID.

Individuals who fall within either of the categories listed below should not attend ELFA conferences or events:

1. Individuals who are experiencing, or within the 14 days prior to the conference or event have experienced, symptoms associated with COVID; or
2. Individuals who believe that they may have been exposed to a confirmed or suspected case of COVID-19 or have been diagnosed with COVID and are not yet cleared as non-contagious by state or local public health authorities or the health care team responsible for their treatment.

Conference and event attendees should self-monitor for signs and symptoms of COVID-19 and are asked to contact ELFA at meetings@elfaonline.org if experiencing symptoms of COVID-19 within 14 days after participating in an ELFA conference or event.

BE YOUR BEST FROM YOUR DESK WITH ELFA ACADEMY ONLINE COURSES!

Prepare yourself with information only available from the ELFA Academy—on demand, when and where you need it!



Fundamentals of Equipment Leasing and Finance -

Discover why equipment financing is good business; follow the lifecycle of a transaction; learn about the tax laws, legal issues, and accounting practices and regulations that govern the industry; and examine the various ways to structure a transaction and maximize customer satisfaction.

Understanding the Master Lease Agreement - Walk through the Master Lease Agreement section by section, view real-world scenarios demonstrating how knowing what's in the MLA can make or break a deal, and access and download exclusive resources available only through the course.

Equipment Finance Transaction Lifecycle - Go step-by-step through the lifecycle of an equipment finance transaction – from origination through termination. As you explore each lifecycle step, you'll focus on the 4Ps – the purpose, people, policies and paperwork tied to it.

Financial Statement Analysis - The only course of its kind available specifically for LEASING credit and risk professionals. Developed in conjunction with Moody's Analytics, the course not only covers the fundamentals that all credit professionals need to know, but goes BEYOND to teach future-focused skills – like projections and forecasting – necessary in today's environment.

GET STARTED ON YOUR PATH TO SUCCESS TODAY!

Individual and bulk pricing available.

For questions, contact Alexa Carnibella, Director of Professional Development at acarnibella@elfaonline.org or 202-238-3416.

<https://www.elfaonline.org/events/elearning/online-courses>



EQUIPMENT LEASING AND FINANCE ASSOCIATION
Equipping Business for Success

2023 ELFA Calendar of Conferences, Workshops and e-Learning Opportunities

FEBRUARY

February 16, 2023
Innovation Roundtable
Virtual • 1pm ET

February 26-28, 2023
Equipment Management Conference & Exhibition
Orlando World Center Marriott
Orlando, FL

MARCH

March 8, 2023
22nd Annual IMN/ELFA Investors Conference
Union League Club
New York, NY

March 14, 2023
Bank Best Practices Roundtable
Captive and Vendor Finance Best Practices Roundtable
Independent Best Practices Roundtable
Small Ticket Best Practices Roundtable
Palmer House Hilton
Chicago, IL

March 14, 2023
Emerging Talent Networking Reception
Palmer House Hilton
Chicago, IL

March 14-16, 2023
34th Annual National Funding Conference
Palmer House Hilton
Chicago, IL

March 26-28, 2023
Executive Roundtable
Omni Amelia Island Resort
Amelia Island, FL

APRIL

April 3-4, 2023
Women's Leadership Forum
Palmer House Hilton
Chicago, IL

April 26-28, 2023
Principles of Equipment Leasing and Finance Workshop
ELFA Headquarters
Washington, DC

MAY

May 7-9, 2023
Hybrid Event - In-person & Virtual!
Legal Forum
Marriott Sanibel Harbour Resort & Spa
Fort Myers, FL

May 18, 2023
Innovation Roundtable
Virtual • 1pm ET

May 24, 2023
Capitol Connections
Hilton Washington DC Capitol Hill
Washington, DC

JUNE

June 7-9, 2023
Hybrid Event - In-person & Virtual!
Credit and Collections Management Conference & Exhibition
Hilton Palacio Del Rio
San Antonio, TX

June 22-23, 2023
Tax Best Practices Roundtable
Offices of Huntington Equipment Finance, Cleveland, OH

JULY

July 13-14, 2023
Emergence2023
Hilton Baltimore Inner Harbor
Baltimore, MD

July 13, 2023
Emerging Talent Networking Reception
Hilton Baltimore Inner Harbor
Baltimore, MD

AUGUST

August 10
Innovation Roundtable
Virtual • 1pm ET

SEPTEMBER

September 11-13, 2023
Operations & Technology Conference & Exhibition
Sheraton New Orleans
New Orleans, LA

September 11-13, 2023
Hybrid Event - In-person & Virtual!
Lease and Finance Accountants Conference
Sheraton New Orleans
New Orleans, LA

September 13-14, 2023
Equity Forum
Sheraton New Orleans
New Orleans, LA

September 13, 2023
People Power Networking Reception
Sheraton New Orleans
New Orleans, LA

September 27-29, 2023
Principles of Equipment Leasing and Finance Workshop
ELFA Headquarters
Washington, DC

OCTOBER

October 22-24, 2023
62nd ELFA Annual Convention
JW Marriott Phoenix Desert Ridge Resort & Spa, Phoenix, AZ

NOVEMBER

November 16, 2023
Innovation Roundtable
Virtual • 1pm ET



The ELFA Academy provides high-quality, interactive training and resources for you and your staff. For a complete listing of the online self-study courses and web seminars available through the ELFA Academy, go to: www.elfaonline.org/Events/eLearning/.

For the latest information and updates go to: www.elfaonline.org/events